

- “AAMCO adjustment,” 80
- Accountability, 32
- Accounting model of value, 65–66
- Accounting rules, mandated, 47
- Accumulated service cost liability, 77
- Acquisitions:
  - EPS and P/E, 238–243
  - exchange of value in, 239–240
  - MVA and, 243
  - pricing of, 236–238
  - public vs. private company, 240
  - synergy value, 240–242
- Acquisitive companies, 281
- Advance Auto Parts, 164–166
- Allen, Franklin, 93
- Amazon (AMZN):
  - business model and, 15
  - cash flow and, 26
  - EVA and MVA, 27
  - EVA Margin and, 139–146, 147
  - EVA ratio metrics, 119–122
  - performance targets and, 162
- America Online (AOL), 243–246
- Amortization costs, 220
- Anheuser-Busch, 87, 88
- AOL. *See* America Online (AOL)
- Apple Inc.:
  - business models and, 15, 107
  - cash reserves and, 51
  - desktop computers and, 89
  - EPS, P/E and, 237
  - EVA and MVA, 36, 37
  - EVA Momentum and, 178
  - global competition for, 185
  - iPhone, 275
  - iTunes, 184
  - market value and, 38
  - performance targets and, 162
  - ROC and EVA/sales profit margin, 95
- Assets:
  - book value of, 52
  - tying up capital, 48
- Asset turnover ratio, 126
- AutoZone:
  - EVA Margin for, 262, 264
  - EVA Momentum and, 272
  - Future Growth Reliance for, 256–257, 262
  - MIM and, 262, 264
  - ‘S’ curve and, 93–94
- AutoZone PRVit score:
  - EVA and, 251
  - Intrinsic Value Score, 255
  - performance figures and, 263
  - Performance Score, 252
  - Profitability Score (P1), 252–253
  - PRVit ratio/PRVit matrix, 257, 258
  - ranking/stock performance, 261, 262
  - Risk Score, 253
  - Trend Score (P2), 253
  - Valuation score, 255–256
  - Volatility Score (R1), 254
  - Vulnerability Score (R2), 254
  - Wealth Multiples Score (V2), 256
  - Wealth Ratios Score (V1), 256
- Bad debt reserves, 68–69
- Ball Corporation:
  - EVA bonus plan, 11–14, 163
  - EVA/MVA connection for, 20–22
  - strategic investments, 80, 81
  - TSR and TIR for, 45–46
  - value improvement and, 27
- Best Buy, 15–16, 34, 184
- Best-Practice EVA. *See also* “5-Ps”
  - bonuses/advancement, 276–277
  - commitment to, 273, 275–276
  - decision/strategy to adopt, 284–285
  - executive decision support applications, 282
  - financial drivers and, 209
  - five-point checklist, 271, 284
  - rhythm of, 279

- Best-Practice EVA (*Continued*)  
 Rhythm of Financial Excellence, 278–279  
 substitution, first, 274  
 substitution, second, 274–275  
 substitution, third, 275  
 synergies and, 241  
 using EVA deeply/widely, 278
- Beta risk, 74
- Biotech companies, 172, 268–270
- Bloomberg, 248, 259
- Blue Nile Inc. (NILE), 95. *See also* TIF/NILE companies
- Bonus plans. *See also* Incentive plans  
 annual performance targets, 159  
 at Ball Corporation, 11–14, 81  
 Best-Practice EVA and, 276–277  
 EVA performance targets and, 10–11  
 shadow EVA bonus multiplier, 280–281  
 three-year, 162–163
- Book value, 39, 193, 215
- Brahma Beer, 87–88
- Brand spend, R&D and, 62–68
- Brand value, 39
- Brealey, Richard A., 93
- Briggs & Stratton, 16
- “Broker vote,” 246
- Business cycles:  
 Market-Implied Momentum (MIM) and, 182  
 risk premiums and, 3  
 swings/long horizons, 172–173
- Business model productivity, 123
- Business models, 107
- Business plans:  
 assumptions and drivers for, 201–205  
 EVA metrics and, 185  
 EVA Momentum and, 215  
 forward plans, 185–186, 202, 204, 215–216  
 improving, 211–212  
 past trends and, 188
- Business sectors. *See* Sectors
- Business unit plans, 192
- Business valuation methods, 33
- BusinessWeek*, 89
- CAGR. *See* Compound annual growth rate (CAGR)
- Capital. *See also* Cost of capital (COC)  
 allocation of, 224  
 charge for using, 42  
 defined, 2  
 intangible, 136–139  
 internally generated cash, 233  
 negative, 95  
 one-time gain on sale and, 59  
 productive, 131–132, 151–152  
 RONA and, 94  
 working (*see* Working capital)
- Capital account, capital gains/losses, 54–59
- Capital charge:  
 accountability and, 32  
 in EVA calculation, 3–4  
 working capital and, 5
- Capital decisions:  
 Claudine’s Salt Water Taffy Company, 227–233  
 NPV Spread and, 234–236
- Capital preservation, 234–235
- Capital spending limit, 223
- Cash, discharging surplus, 51
- Cash flow, 25–27. *See also* Discounted cash flow (DCF); Free cash flow (FCF)
- Cash operating profit, 130–131
- Cash operating profit margin, 127
- Chase Manhattan Bank, 83
- Checklist, five-point, 271, 284
- Christensen, Clayton, 88
- Claudine’s Salt Water Taffy Company, 227–233, 283
- COC. *See* Cost of capital (COC)
- Coca-Cola Company:  
 business models and, 107  
 EVA and, 14–15, 33  
 EVA Momentum and, 166–170, 173–174, 182, 187–188, 215–216  
 RONA and, 86–87, 88
- COGS. *See* Cost of goods sold (COGS)
- Colvin, Geoff, 245–246
- Common equity book value, 193
- Companies. *See* Firms
- Company-specific metrics, 135
- Compound annual growth rate (CAGR), 122
- Consensus EPS, 105
- Consensus EVA plan, 221
- Contingency plans, 207
- Continuous improvement performance metric, 276
- “Cookie jar” reserve, 68
- Corporate bonds, 74
- Corporate charges, TIF/NILE companies, 153–154

- Corporate market value, 39
- Corporate oversight, 225
- Cost(s):
- amortization, 220
  - restructuring, 59–61
  - sunk, 102
- Cost of capital (COC):
- capital allocation and, 224
  - debt leverage and, 45–46
  - deducting, 47
  - described, 2–3
  - EVA setting aside, 25
- Cost of goods sold (COGS), 131
- Credit Suisse, 246
- Credit Suisse First Boston (CSFB), 88
- Crown Holdings, 22, 23
- CSFB. *See* Credit Suisse First Boston (CSFB)
- CSX Corporation, 16
- Current value added (CVA), 30, 195
- CVA. *See* Current value added (CVA)
- DCF. *See* Discounted cash flow (DCF)
- Deadbeat loans, 68
- Debt leverage, 45–46
- Deferred tax liability, 69–71
- Dell, 34
- Deloitte CFO Survey, 187
- Depreciation:
- cash flow and, 25
  - PPE assets and, 140
  - reported, 238
- Digital technology, 185–186
- Discounted cash flow (DCF). *See also* Cash flow
- EVA Momentum and, 200
  - holistic approach and, 224
  - market value and, 214
  - NPV analysis, 202
  - stopping use of, 26, 274–275
- Discount Internet retailer, 95
- Domtar Corp., 178–179
- Dot-com bubble, 12
- Downturns, 3
- Dresser Industries, 238
- DuPont ROI formula/model, 85, 122, 124–125, 275
- Earnings before interest, taxes, depreciation, and amortization (EBITDA), 3
- Earnings before interest and taxes (EBIT), 3, 205
- Earnings per share (EPS):
- accounting model of value and, 65–66
  - acquisitions and, 236, 238
  - EVA and, 34, 274
  - OCI and, 75
  - offset by P/E, 238–243
- EBITDA, 219–220, 274
- EBITDAR:
- cash operating profit, 130–131
  - computation of, 134
  - EBITDA and, 127
  - median margin, 187
  - NOPAT and, 219–220
  - for Tiffany's (TIF), 148–151, 202, 204, 219
- EBITDAR Margin, 127, 128–129
- EBITDAR multiple, 256, 267
- Ecolab, 44–45
- Economic value added. *See* EVA
- Enron, 69
- Enterprise valuation multiple, 219
- E Pluribus Unum* and *E Unum Pluribus*, 93–100, 197, 201, 205, 227, 259, 275
- EPS. *See* Earnings per share (EPS)
- Equifax, 97
- Equity analysts, 195
- ERISA, 77
- EVA (economic value added):
- as additive, 91, 225
  - basic calculation, 3, 82
  - charge for using capital and, 42
  - computation of profit, 1
  - discounted present value of, 225
  - discounting to NPV, 20
  - Momentum and, 205
  - monitoring at margin, 33
  - target of, 81
  - targets, setting (*see* EVA targets)
  - timing value in, 70–71
- EVA Dimensions, 38, 68, 71, 98, 166, 180, 246, 275, 285. *See also* Software tool
- EVA Margin. *See also* PV EVA Margin
- advantages to, 126
  - Amazon and, 139–146, 147
  - for AutoZone, 272, 274
  - biotech companies and, 268–269
  - at Coca-Cola Company, 168
  - company-specific metrics and, 135
  - EBITDAR, 130–131
  - EBITDAR/EBITDAR Margin, 127
  - EVA Momentum and, 127

- EVA Margin (*Continued*)
- EVA Pyramid level 2, 127–129
  - EVA Pyramid level 3, 129
  - franchise value and, 214
  - Innovator's Dilemma and, 186–187
  - intangible capital, 136–139
  - knowing your, 190
  - over time, averages, 187–188
  - PPE and, 134–136
  - pretax, 129
  - principal applications, 126–127
  - productive capital, 131–132
  - PV EVA Margin and, 227
  - summary view of, 123–124, 158–159
  - tale of two companies, 146
  - TIF/NILE companies (*see* TIF/NILE companies)
  - working capital and, 133–134
- EVA Margin Before Tax, 124
- EVA Momentum:
- 75th percentile/five-year, 175–177
  - 90th percentile/five-year, 175, 178–179
  - for Amazon, 121, 122
  - for AutoZone, 262
  - biotech companies and, 172
  - at Coca-Cola Company, 166–170, 174–175, 180, 186–187
  - DCF, NPV and, 202
  - described, 101–104
  - first look at, 109–114
  - five-year leaders, 174–182
  - food/beverage companies, 182–184
  - forward pass and, 215–216
  - goal setting and, 173–174
  - growth targets and, 167
  - maximization of, 123, 127
  - median, 173
  - no (“No Mo”), 214
  - for Pier I, 175, 178–181
  - in planning (*see* Planning process)
  - projection of, 190
  - P score/PRVit score and, 258
  - Russell 3000 companies, 171–174
  - sector/industry group and, 180–186
  - in software/specialty retail, 184
  - stock price and, 166
  - for Sun Hydraulics, 178–181
  - for Tiffany's, 197, 205, 266
  - for whole market, 186
- EVA Momentum Pyramid. *See* EVA Pyramid
- EVA Momentum scorecards, 191, 205, 207, 209, 216
- EVA Nuggets, 283–284
- EVA performance expectations, 193
- EVA Pyramid:
- business plans and, 207, 216
  - level 2, 127–129
  - level 3, 129
- EVA ratio metrics:
- for Amazon, 119–122
  - E Pluribus Unum* and *E Unum Pluribus*, 99–100
  - EVA Margin, 105–109
  - EVA Momentum, 101–104, 109–114
  - Market-Implied Momentum (MIM), 104–105
  - market metrics, 114–119
  - overview, 100–101
- EVA stock rating model, 83
- EVA targets:
- business plan outputs, 161, 170
  - EVA Margin and, 170–171, 186–187
  - EVA Momentum/Russell 3000, 171–174 (*see also* EVA Momentum)
  - incentive plans (*see* Incentive plans)
  - Market-Implied Momentum (MIM) and, 181, 183, 185, 188
  - Momentum Leverage Ratio (MLR), 175
  - table of, 161, 170
- EVA training, 4
- Excel tool, 192
- Exxon, 237
- Fair-value line, 247–249
- FCF. *See* Free cash flow (FCF)
- Federal Reserve policy, 186, 188
- Fidelity.com, 246
- FIFO value, 131, 133
- Finance ratios. *See* EVA ratio metrics
- Financial excellence, 278–279
- Financial objective. *See* EVA Momentum
- Financial performance variables, 194
- Financing decisions, 48–51
- Firms. *See also specific company*
- new economy, 95
  - types of, 34–35
- “5-Ps;”
- Perform, 283–284
  - Pilot, 277
  - Practice, 278, 280–283

- Prepare, 277
- Prototype, 277–278
- Five-point checklist, 284
- Fixed charge costs, 228
- Food/beverage companies, 180–181, 186, 198. *See also specific company*
- Foreign exchange (FX) transactions, 125
- Formula-based bonus plan, 11
- Fortune*, 16, 20, 87, 246–246
- Forward pass, 215–216
- Forward plans:
  - discounting EVA profit, 191
  - EVA Momentum and, 215–216
  - PPE and, 206
  - Value *Express* and, 204
  - valuing of, 193
- Franchises, 166
- Franchise value, 39, 214. *See also MVA* (market value added)
- Free cash flow (FCF):
  - for Amazon, 121
  - new investments and, 225
  - NOPAT and, 28–29, 30–31, 42
  - for Tiffany's, 207, 209
- Funding deficit, 75
- Future Growth Reliance (FGR):
  - for Apple Inc., 36, 37, 38
  - for AutoZone, 256–257, 262
  - for Tiffany's, 220, 267
- Future value added. *See FVA* (future value added)
- FVA (future value added):
  - growth horizons and, 35–36
  - growth in EVA and, 32
  - to market value (MGR), 36, 38
- FX. *See Foreign exchange (FX) transactions*
  
- GAAP. *See Generally accepted accounting principles (GAAP)*
- Gabelli, Mario, 89, 90
- GARP. *See Growth at a reasonable price (GARP)*
- Generally accepted accounting principles (GAAP), 58
- Georgia-Pacific, 80
- Global competition, 185
- Global PRVIt Prime scores, 260
- Going-concern business enterprise, 39, 48, 68, 83, 197
- Google, 107
- Government bonds, 3, 74–75
- Green Mountain Coffee Roasters, 35, 180, 182
- Grove, Andrew, 88
- Growth at a reasonable price (GARP), 247
- Growth horizon, 34–35
  
- Halliburton, 238
- Hallmarks of EVA company, 271
- Housing bubble, 12
- Hurdle rate, 24
  
- IBM:
  - Equifax and, 97
  - Innovator's Dilemma and, 88–89
- IFRS. *See International Financial Reporting Standards (IFRS)*
- Impairment charge, 52
- Incentive plans. *See also Bonus plans*
  - EVA target table, 161, 170
  - long-term (*see Long-term incentive plans*)
  - medium-range, 166–168
  - pay-for-performance, 162
- Industry groups, 181–187
- Information technology (IT), 135, 276. *See also Technology*
- Innovator's Dilemma:
  - EVA Margins and, 193–195
  - IBM and, 88–89
  - RONA and, 88
- The Innovator's Dilemma* (Christensen), 88
- In-store stocking rate, 94
- Intangible capital, 136–139
- Intangibles:
  - EVA Margin schedule and, 132
  - TIF/NILE companies, 152–153
- Intel, 88
- Internal rate of return (IRR):
  - EVA Margin and, 126–127
  - NPV Spread and, 235
  - pitfalls of RONA and, 93
- Internal Revenue Service (IRS), 72
- International Accounting Standard No. 36 (IAS 36), 53
- International Financial Reporting Standards (IFRS), 52
- Internet retailer, 95
- Investments, strategic, 79–81
- Investor relations (IR), 240, 271
- IR. *See Investor relations (IR)*

- IRR. *See* Internal rate of return (IRR)
- IRS. *See* Internal Revenue Service (IRS)
- IT. *See* Information technology (IT)
- Ive, Jonathan, 275
- Jergens Inc., 66–67, 68
- JetBlue Airways Corp., 178–179
- Jobs, Steve, 36, 38, 88, 275
- Jollibee Foods, 79
- Jose Reyes syndrome, 89
- Kao USA, 66–67
- Leases:
  - capitalized or expensed, 94
  - treating as if owned, 52
- Liabilities, assets as, 48
- Line-of-business plans, 198, 206
- Loan loss reserve, 68–69
- Long-term incentive plans:
  - at Advance Auto Parts, 164–166
  - at Coca-Cola Company, 166–170
- Manitowoc Company, 89–90
- Manufacturers, 135
- Margin. *See* EVA Margin
- Margin elasticity, 199
- Market-Implied Momentum (MIM):
  - for Amazon, 121
  - for AutoZone, 262
  - described, 104–105
  - EVA growth goal and, 163
  - for Tiffany's, 202
- Market-Implied Momentum (MIM) and, 184, 186, 188, 190, 192
- Market saturation, 33
- Market-to-book premium, 200
- Market-to-book spread, 31
- Market value:
  - MVA and, 29
  - of plan, 198
- Market value added. *See* MVA (market value added)
- Massey Ferguson, 61
- Measured postrent expense, 219
- Measured prerent expense, 219
- Metrics, 135. *See also specific metric*
- Microsoft, 39, 51, 89
- MIM. *See* Market-Implied Momentum (MIM)
- MLR. *See* Momentum Leverage Ratio (MLR)
- Momentum. *See* EVA Momentum
- Momentum Leverage Ratio (MLR), 175, 202
- Momentum Pyramid, 122
- Monsanto, 64–65, 68
- Monster Beverage, 183–185
- Multiples. *See also* Price-to-earnings (P/E) multiple
  - dividing good into bad, 217–222
  - enterprise valuation, 219
  - NOPAT, 220
  - stocks and, 40
- MVA (market value added):
  - acquisitions and, 243
  - for Amazon, 121
  - for Ball Corporation, 20–22
  - cash flow and, 26
  - CVA and, 129
  - described, 19
  - formula, 38
  - market value and, 29
  - return from increasing, 42
  - for Tiffany's, 239
- MVA Margin ratio, 218–219
- MVA Spread, 217–218
- Myers, Stewart C., 93
- Negative capital, 95
- Net depreciated asset base, 136
- Net franchise value, 199
- Net present value (NPV):
  - EVA and, 20, 25
  - EVA Margin and, 126
  - EVA Momentum and, 202
  - looking forward/backward, 276
  - MVA and, 19
  - NOPAT and, 31
  - profitable growth and, 7
- New economy companies, 95
- NOPAT (net operating profit after taxes):
  - capital charge and, 5
  - EBITDAR and, 219–220
  - in EVA calculation, 3–4
  - excess cash and, 51
  - FCF and, 28–29, 30–31, 42
  - leases and, 52
  - multiples, 220, 256
  - profit target, 6

- significance of, 29
  - for Volkswagen, 24
- NPV. *See* Net present value (NPV)
- NPV Spread, 234–236
- OCI. *See* Other comprehensive income (OCI)
- Off-balance-sheet liability, 77
- On-balance-sheet liability, 77
- One-time gain on sale, 59
- Operating decisions, 48–51
- Operating profit, 130–131
- Operating profit margin, 127
- Other comprehensive income (OCI), 75, 76
- Outsourcing, 96–97, 106
- P/E. *See* Price-to-earnings (P/E) multiple
- Pension plans, 75, 82. *See also* Retirement cost distortions
- PepsiCo, Inc.:
  - adoption of EVA, 284–285
  - business models and, 107
  - taxes and, 71–72
- Percentile ratings, TIF/NILE companies, 154–158
- Performance improvement categories, 7
- Performance metrics, 17, 28, 276. *See also specific metric*
- Performance profile, 193
- Performance reviews, 216
- Pfeifer, Dean, 89
- Pier I, 175–177
- Planning process:
  - business plans (*see* Business plans)
  - Excel tool (*see* Value Express)
  - forward plans (*see* Forward plans)
  - planning reviews, 190–191
  - portfolio reviews, 191
  - for Tiffany's (*see* Tiffany's planning process)
- Portfolio reviews, 191
- Post-employment-benefit (PRB), 77
- Postrent expense, 219
- PPE. *See* Property, plant, and equipment (PPE)
- PRB. *See* Post-employment-benefit (PRB)
- Prerent expense, 219
- Present value, 25, 32. *See also* PV EVA Margin
- Pretax cost of capital rate, 131–132
- Pretax margin, 129
- Price-to-earnings (P/E):
  - acquisitions and, 236–237
  - EPS and, 238–243
- Price-to-earnings (P/E) multiple, 65–66, 76, 217
- Principles of Corporate Finance* (Myers, Brealey, and Allen), 93
- Productive capital, TIF/NILE companies, 151–152
- Productive capital charges, 129
- Productive capital intensity, 140
- Profit:
  - computation of, 1
  - performance metrics (*see* Performance metrics)
- Profitable companies, 266
- Property, plant, and equipment (PPE), 126, 134–136, 204
- Proprietary franchise value, 39
- PRVit (performance-risk-valuation investment technology):
  - analysis, 280, 283
  - custom research and, 268
  - described, 246
  - fair-value line and, 247–249
  - global performance, 260–261
  - performance since 1998, 259
  - PRVit matrix/VARP grid, 249
  - Score (*see* PRVit score)
  - specialty retail stocks, 249–251
  - valuation multiples and, 248
  - VARP and GARP, 247
  - for year ending Sept 2012, 260
- PRVit Prime scores, 260
- PRVit score. *See also* AutoZone PRVit score
  - formula, 249
  - industry-adjusted, 251
  - (P – R) score, 249, 251, 255, 258
  - PRVit yield and, 257–259
  - (P-R)/V ratio, 257
  - Tiffany's and, 264–267
  - V score, 249, 251, 255–256
- Public companies, 80, 193
- PV EVA Margin. *See also* EVA Margin
  - advantages to using, 235
  - derivation of, 226
  - described, 234
  - EVA Margin metric and, 227
  - risk and, 236

- QPI. *See* “Quantitative-Pressure Gauge” (QPI)  
 “Quantitative-Pressure Gauge” (QPI), 270  
 Quarterly performance reviews, 216  
 Quarterly reporting, 280
- R&D. *See* Research and development (R&D)
- Rate-of-return metrics, 97
- Ratio metrics, 98. *See also* EVA ratio metrics
- Regression model, 266  
 Regression to the mean, 173  
 Rental rate, 140  
 Rent expense, 130  
 Reported charges, 220  
 Reported earnings, 75  
 Reporting, quarterly, 280  
 Research and development (R&D), 11, 62–68  
 Research In Motion (BlackBerry), 35, 184  
 Restructuring costs, 59–61  
 Retailers, 135  
 Retirement cost distortions, 73–79. *See also* Pension plans
- Return on capital (ROC):  
 Return on equity (ROE), 78  
 Return on investment (ROI), 11, 126, 235  
 Return on net assets. *See* RONA (return on net assets)
- Reverse impairment charges, 52–54  
 Rhythm of Financial Excellence, 276, 277  
 Risk-adjusted EVA performance, 248–249  
 Risk metrics, 266  
 ROC. *See* Return on capital (ROC)  
 ROE. *See* Return on equity (ROE)  
 ROI. *See* Return on investment (ROI)  
 RONA (return on net assets):  
 Amazon and, 119, 122  
 Anheuser-Busch and, 87, 88  
 Christensen on, 88  
 Coca-Cola and, 86–87, 88  
 EVA compared to, 86  
 height of building and, 91–93  
 internal divisions/asset assignment, 95–96  
 Manitowoc Company and, 89–90  
 maximization of, 86  
 as misleading indicator, 85, 91  
 new economy companies and, 95  
 outsourcing and, 96–97, 106  
 pitfalls of IRR and, 93  
 ratio metrics and, 97–98  
 returns from all projects, 102  
 shortcomings of, 94–95, 125
- Russell 3000 companies. *See also* AutoZone  
 PRVit score; TIF/NILE companies  
 EVA Margin and, 245  
 EVA Momentum and, 171–174  
 long-run norms and, 33  
 Market-Implied Momentum (MIM) percentiles, 183  
 PRVit scores and, 260  
 specialty retail stocks, 249–251
- Sectors, 178, 181  
 Selling, general, and administrative (SG&A), 131, 148  
 Sell-side equity analysts, 196  
 SG&A. *See* Selling, general, and administrative (SG&A)
- Shareholder returns:  
 EVA and, 41–46  
 sources of, 36
- Share price, from EVA to, 38–41  
 Smith, Adam, 41  
 Smith, Alex, 176–177  
 Software companies, EVA Momentum and, 178, 180  
 Software tool, 20, 164, 277, 281
- Specialty retail:  
 EVA Momentum and, 174, 178  
 PRVit ratings and, 249–251
- SSCo (simple sample company):  
 EVA calculation for, 3–4  
 MVA of, 29  
 NOPAT and, 4, 28
- Sterling, Craig, 246  
 Stern Stewart & Company, 16
- Stock(s):  
 intrinsic value of, 247–248  
 multiple and, 40  
 pricing of, 34  
 valuations, 210
- Stock appreciation rights (SARs), 165  
 Stock-outs, 94  
 Stock-rating model, 83. *See also* PRVit (performance-risk-valuation investment technology)
- Strategic investments, 79–81  
 Strategic vision, 166–167



- Sun Hydraulics, 176–177
- Sunk costs, 102
- Synergy value, 240–242
- Tax deferral, 69–71
- Tax prepayments, 69
- Technology, 184–185. *See also* Information technology (IT)
- 10-Q filings, 119
- Terminal value, 33
- “3-P’s” (pricing power, product mix, process excellence efficiency), 112, 129, 188
- Tiffany & Co. (TIF):
- EBITDAR and, 219, 267
  - EVA-based valuation multiples, 217–218
  - EVA Momentum, 172, 174, 266–267
  - FGR of, 220
  - Future Growth Reliance, 220, 267
  - hypothetical forecast plans, 193
  - legacy/brand/prestige of, 253
  - MVA Margin ratio, 219–219
  - MVA of, 221
  - MVA Spread for, 217–218
  - NOPAT multiples, 220
  - Planning (*see* Tiffany’s planning process)
  - profitability of, 195
  - projected EVA growth, 220–221
  - PRVIt score and, 264–267
  - risk profile for, 266
  - V2 score, 267
- Tiffany’s planning process:
- alternative scenarios, 210, 212
  - consensus plan/*Value Express*, 195, 298, 205, 208, 211, 213
  - EBIT and, 208
  - EBITDAR margin and, 205, 207
  - EVA Margin and, 195, 202, 203, 208
  - EVA Momentum and, 197, 202, 208, 214
  - five-year EVA highlights, 193–195
  - forecast and, 195–196
  - free cash flow and, 208, 210
  - MIM and, 203–204
  - Momentum Leverage Ratio, 200
  - MVA projections, 199
  - NOPAT and, 208, 210
  - PPE metrics, 207
  - sales growth case, 202
  - valuations and, 214–215
  - working capital productivity plan, 211–213, 215
  - zero Momentum case, 200, 202
- TIF/NILE companies:
- corporate charges and, 153–154
  - EVA Margin comparison, 148
  - EVA Margin drivers comparison, 150
  - EVA/MVA charts, 156–158
  - intangibles and, 152–153
  - overview, 146, 148
  - percentile ratings and, 154–158
  - productive capital and, 151–152
  - TIF’s EBITDAR margin, 149, 151
- Time Warner, 245–246
- TIR. *See* Total investor return (TIR)
- Total investor return (TIR):
- defined, 41–42
  - for Ecolab, 44–45
  - formula, 43
  - TSR and, 44
- Total Quality Management (TQM), 6
- Total shareholder return (TSR):
- described, 41
  - for Ecolab, 44–45
  - formula, 44
- TQM. *See* Total Quality Management (TQM)
- Trade credit, 4
- Transportation companies, 135
- Trends, 127
- TSR. *See* Total shareholder return (TSR)
- Valuation(s):
- accounting model of, 66
  - of acquisition candidates, 281
  - details, 28–38
  - framework for, 207
  - growth horizon and, 34
  - Momentum and, 202
  - multiples (*see* Multiples)
- Valuation bias, 204
- Valuation multiples:
- NOPAT and, 256–257
  - PRVIt model and, 248
- Value:
- accounting model of, 65–66
  - creation of, 20, 158, 285
  - terminal, 33
- Value at a reasonable price (VARP):
- fair-value line and, 247

Value at a reasonable price (*Continued*)  
grid, 249

Valuation score (V), 255–256

Value-based planning, 20, 216

Value *Express*, 192, 195–196, 201–202, 204,  
206–207, 209

Value neutral corrective adjustments, 82

Variety Corporation, 61–62

VARP. *See* Value at a reasonable price (VARP)

Vision. *See* Strategic vision

Vitamin Shoppe, 93, 94

Volkswagen, 23, 24, 27

*Wall Street Journal*, 16

Wal-Mart, 15, 34, 59, 184

Wealth creation:

as corporate mission, 41

EVA as measure of, 22

fundamental principal of, 20

RONA and, 86

sources of, 36

*The Wealth of Nations* (Smith), 41

Working capital:

capital charge and, 5

charge, levels 4 & 5, 133–134

interest-free credit and, 4

productivity plan, 209–213

Zero Momentum case, 196–197

# Special Bonus – EVA Company Report

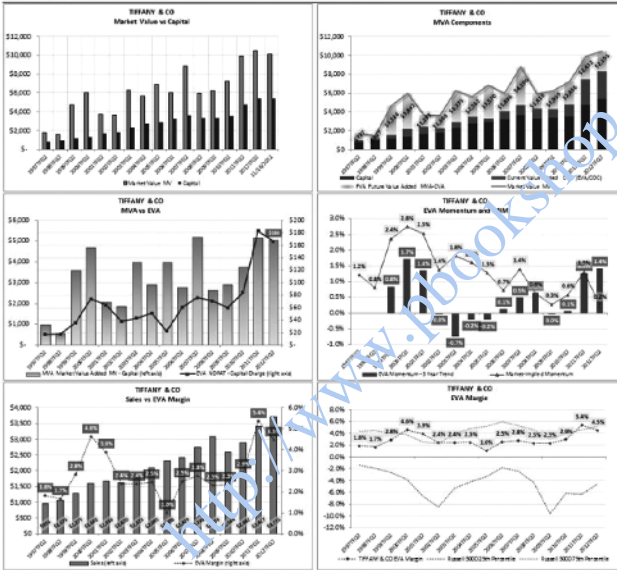
evaDimensions

Congratulations! As a Best-Practice EVA book buyer, you are entitled to a complimentary download of a special 6-panel report for a public company you select from EVA Dimensions' 9,000 company global database.

To access your free report, first, visit this web address:  
<http://www.evadimensions.com/learnEVA/BestPracticeEVA/Book/BonusReport>

Then, enter this unique number [ **BPEVA20130110** ] in the entitlement window, select the company you want to view, and after registering as a **Best-Practice EVA** reader, you will be able to view the report on screen, save it, print it, and share it. It's yours to keep.

## EVA Essentials Charts



The special 6-panel report you receive will open a window on the essential EVA insights for the company you choose, covering a 15-year history of:

- The EVA measure of economic profit compared to the MVA measure of owner wealth
- The firm's EVA Margin – its key measure of business model productivity – benchmarked against market norms
- The track record for EVA Momentum – the measure of the growth pace in economic profit – as compared to the “market-implied” Momentum growth rate that investors implicitly baked into the firm's share price.

All in all, it's a well-documented two-page report that tells the basic EVA story in pictures. You can also visit <http://www.evadimensions.com/EVAvsMVA> to download the EVA vs. MVA chart for as many companies as you want any time you want – it's an open-access portal to EVA!

THE DEFINITIVE GUIDE TO  
MEASURING AND MAXIMIZING  
SHAREHOLDER VALUE

BEST-PRACTICE  
**EVA**

THE  
BEST  
PRACTICE  
EVA  
BOOK

G. BENNETT STEWART III  
EVA DIMENSIONS LLC

**Learn More about using Best-Practice EVA at your organization:**

### Corporate Finance

Software, training and hands-on support that enable corporate CFO teams to take BP-EVA for a test drive or to put it into action right across business units, business plans, and business decisions.

### Consultants

Tap into **Express**, EVA Dimension's acclaimed on-demand toolkit to analyze, project, value and benchmark any of the 9,000 public companies in our global file.

### Investors

EVA Dimensions provides EVA data, quantitative analysis, screens, portfolio reviews, sector analysis, PRVIt ratings and custom insights on themes and names that our institutional investor clients care about.

### Bankers/Buyers

Software and training to put BP-EVA to work to analyze and value buy-sell transactions

**For more information visit**

<http://www.evadimensions.com/learnEVA/BestPracticeEVA>

<http://www.pbookshop.com>

<http://www.pbookshop.com>

<http://www.pbookshop.com>

<http://www.pbookshop.com>

<http://www.pbookshop.com>